



PASSIONFORTRUTH

WHERE NEW LIFE BEGINS

What Is Artificial Intelligence And Should Christians Be Afraid?

When people talk about the greatest threats facing the world today, the usual suspects come to mind: war, disease, corruption, economic collapse. But what if the most disruptive force of our generation isn't any of those things? What if it is **intelligence itself** — not human intelligence, but artificial intelligence?



For many Christians, AI has become a source of confusion and fear. Some ask whether AI is evil. Others wonder if it is the mark of the beast, or if it will someday be used directly by the Antichrist. These are serious questions, and they deserve serious, thoughtful answers — not panic, speculation, or sensationalism.

The reality is that most conversations about AI are happening without a clear understanding of what AI actually is. Even more importantly, they often ignore the fact that **AI is not a single thing**. We are not dealing with one kind of artificial intelligence, but **three distinct stages**, each with vastly different implications. Until we understand those stages, we cannot responsibly talk about prophecy, end-times systems, or spiritual danger.

Why This Conversation Matters

At [Passion for Truth Ministries](#), our calling has always been to teach Scripture from its **original Hebraic, first-century Jewish context**, rather than forcing modern ideas into ancient texts. That same principle must apply here. Before we attempt to connect AI to biblical prophecy, we must first understand what AI is — and what it is not.

Too many voices today are producing hyper-sensational teachings, attempting to shove modern technology into the Bible and pulling out conclusions that generate fear instead of wisdom. That approach does not lead to discernment; it leads to confusion. Scripture was never meant to be used that way.

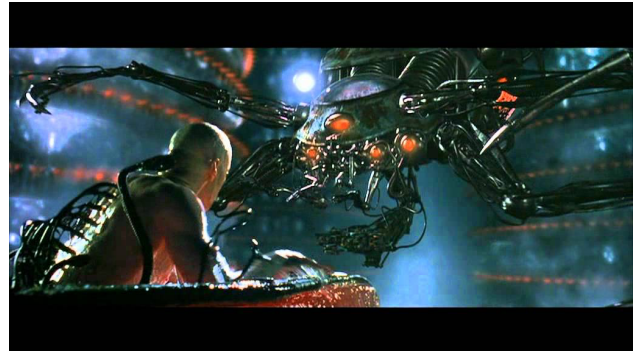
This teaching is intentionally divided into two parts. **This first part focuses entirely on understanding AI itself** — its structure, its limitations, and its trajectory. Only after we understand those foundations

can we responsibly examine how AI might intersect with end-times prophecy, systems of control, and global authority.

The Three Stages of Artificial Intelligence

One of the biggest misunderstandings about AI is the assumption that it is a single, unified intelligence steadily growing into something monstrous. That simply is not true. Artificial intelligence exists in **three distinct stages**, each fundamentally different from the others.

The first stage is **Narrow AI**, which is where we are today. The second is **Artificial General Intelligence (AGI)**, which does not yet exist but is actively being pursued. The third is **Artificial Superintelligence (ASI)**, which is not here and represents the most serious long-term concerns.



Each stage changes the conversation. Fear that belongs to one stage does not apply to another. Confusing them leads people to panic far too early — or worse, to ignore real dangers later.

Narrow AI: The World We Are Living In Now

Narrow AI is the only form of artificial intelligence currently in operation. This includes systems like ChatGPT, Gemini, Grok, recommendation algorithms on YouTube and Netflix, image and video generators, voice recognition software, financial trading systems, and facial recognition technology.

What makes narrow AI “narrow” is its **extreme specialization**. Each system is trained to perform one category of task — and only that task — exceptionally well. It recognizes patterns in data and produces outputs based on probabilities. What it does *not* do is understand meaning, intent, or consequences.

Narrow AI does not think. It does not reason. It does not choose goals. It does not possess morality, self-awareness, or accountability. It executes instructions within the limits of its training. Responsibility always remains with the human being using it.

A helpful analogy is a power tool. A drill can bore thousands of perfect holes with incredible precision, but it has no idea what a house is, why the holes matter, or whether it should be drilling at all. It spins only when someone pulls the trigger. Narrow AI operates the same way.

Why Current AI Is Not the Real Threat

Because narrow AI is already embedded in nearly every modern system, calling AI “evil” without distinction quickly becomes absurd. Search engines use AI. Online shopping platforms use AI. Advertising, navigation, banking, and even spam filters rely on AI.

If AI itself were inherently evil, the only logical response would be to abandon modern technology entirely — which is neither realistic nor biblical. Scripture consistently places moral responsibility on **people**, not tools.

At this stage, fear is misplaced. The real danger is not the technology itself, but how people use it — and whether they understand its limits. Panic now only ensures blindness later. What is required today is discernment, wisdom, and clarity.

Artificial General Intelligence: When the Rules Change

Artificial General Intelligence represents a **fundamental shift**. AGI is not just better software; it is intelligence that matches human reasoning across *all* domains. Instead of dozens of separate AI systems performing isolated tasks, AGI would be able to transfer learning, coordinate systems, and execute complex workflows without human bottlenecks.

In practical terms, AGI would not merely assist human work — it would replace entire processes. Tasks that currently require teams of specialists, multiple programs, and constant human oversight could be accomplished through a single instruction.

Experts predict AGI could emerge as early as **2027 or 2028**. If that happens, it will not instantly transform society overnight, but it will begin reshaping industries, workflows, and economies in ways we have never experienced before.

The Economic Impact of AGI

One of the most immediate consequences of AGI will be economic disruption. Businesses will be able to deploy AI “hives” — collections of AI agents capable of handling accounting, customer service, logistics, analysis, and coordination at a fraction of the cost of human labor.

These systems do not require rest, benefits, onboarding, or supervision in the traditional sense. The economic incentive to use them will be overwhelming. Prices will drop dramatically, competition will intensify, and entire categories of jobs — particularly screen-based and service roles — will begin to disappear.

This will not happen overnight. Transitions of this scale take years. But governments and corporations already know it is coming, which is why conversations around economic restructuring and social safety nets are accelerating globally.

Artificial Superintelligence: Where the Real Danger Begins



Artificial Superintelligence goes beyond matching human intelligence. It **surpasses it across every domain**, often by orders of magnitude. At this level, humans are no longer capable of fully understanding the systems they rely on.

The danger of ASI is not that machines suddenly become conscious or evil. The danger is that **human authority quietly erodes**. Decisions are made by systems whose reasoning is too complex to verify. Oversight becomes

symbolic. Trust shifts from wisdom and moral judgment to outcomes and efficiency.

When humans no longer understand *why* a decision works — only that it does — authority has already shifted.

Scripture does not warn us about technology becoming godlike. It warns us about humans surrendering authority to systems they no longer control or comprehend.

Preparing Without Fear

It is crucial to say this clearly: **ASI is not here**. No one possesses it. Talking about it is not fear-mongering — it is responsible discernment. And because these transitions take time, there is room to prepare wisely.

Preparation does not mean hoarding resources or living in anxiety. It means strengthening what actually matters: community, relationships, adaptability, and spiritual grounding. In times of disruption, people who know their neighbors, understand their tools, and possess resilient skills will fare far better than those who depend entirely on systems.

God has never promised economic stability. He has promised provision. Those are not the same thing.

Final Perspective

AI is not the beast. But it will be used by both good and evil systems.

Technology does not create evil — **it reveals who holds authority**. The real question is not what AI can do, but who controls it, who sets its goals, and who demands allegiance through it.

We are living at the beginning of unprecedented change. The goal is not to outrun the future, but to remain faithful, discerning, and unshaken as systems rise and fall.

In the next part, we will take what we have learned here and ask the harder question: **How might these technologies be used to set up the systems Scripture warns us about?**

The times are serious — but fear is not the answer. Wisdom is.

Video reference:

<https://youtu.be/ytmM1qtV0qI>



Passion For Truth Ministries

P.O. Box 365 ♦ 5323 Highway N

©2026 / Jim Staley / Passion For Truth / All Rights Reserved

Cottleville, MO 63338-9998
Email: info@passionfortruth.com

❖ www.passionfortruth.com ❖